

925 AG TELEHANDLER

Thanks to their versatility and strength, telehandlers are an ideal option for farms that need one machine to handle a variety of tasks. Attachments like bale clamps, buckets and forks are useful for agriculture applications, from handling silage and loading hay bales to cleaning out pens. Plus, with travel speeds of up to 25 mph and a tight turning radius, telehandlers can work productively in and around barns, including up and down livestock rows.



KEY FEATURES

Greater Versatility

- Range of agriculture-focused attachments for performing multiple jobs around the farm
- Precision lifting with excellent attachment rotation for faster bucket speeds with better tilt angles during a range of bucket-work

Increased Operator Confidence

- Load Stability Indicator (LSI) system that automatically limits operation when a load is nearing maximum capacity
- Optional multifunction display with integrated electronic load charts, a reversing camera, onboard diagnostics and analyzer capabilities

Enhanced Operator Comfort

- Quiet, spacious cab with superior visibility and optional air conditioning
- Optional ride control that ensures a smooth driving experience even over rough terrain

PERFORMANCE

Rated Load Capacity	8,800 lb	4,000 kg
Maximum Lift Height	24.9 ft	7,600 mm
Maximum Forward Reach	14 ft	4,300 mm
Load at Maximum Height	4,000 lb	1,820 kg
Load at Maximum Reach	2,900 lb	1,318 kg
Lift Speed (boom retracted)		
Up	7.2 sec.	
Down	5.5 sec.	
Boom Speed		
Extended	6 sec.	
Retracted	5.3 sec.	
Attachment Tilt		
Forward	3.5 sec.	
Backward	2.9 sec.	
Top Travel Speed	24.9 mph	40 kph
Turning Radius Over Tires	144 in.	3,675 mm
Operating Weight	18,438 lb	8,380 kg



STANDARD SPECIFICATIONS

Engine

Make and Model	Deutz TCD 3.6 L04	
No. of Cylinders	4	
Displacement	220 cu. in.	3.6 L
Gross Power (basic)	120 HP	90 kW
	134 HP	100 kW
Maximum Torque	354 lb-ft	480 Nm
HP @ RPM	120 HP @ 2,200 RPM	
	134 HP @ 2,200 RPM	
Fuel Tank Capacity	39 gal.	148 L
Reversing Fan		

Hydraulic System

Type of Hydraulic Pump	Piston	
System Operating Pressure	3,988 psi	275 bar
Auxiliary Hydraulic Pressure	3,481 psi	240 bar
Auxiliary Flow to Boom Head	26 gpm	100 lpm
Hydraulic System Capacity	34 gal.	130 L

Transmission

Transmission Type	6-Speed Power Shift	
No. of Gears		
Forward	6	
Reverse	3	
Drawbar Pull (loaded)	23,000 lbf	102 kN

Axles

Axle Type		
Front	High Bias, Limited Slip	
Rear	Planetary	
Steering	All-Wheel	

Tires

Optional	460/70 R24 MICHELIN XMCL
Optional	500/70 R24 MICHELIN XMCL

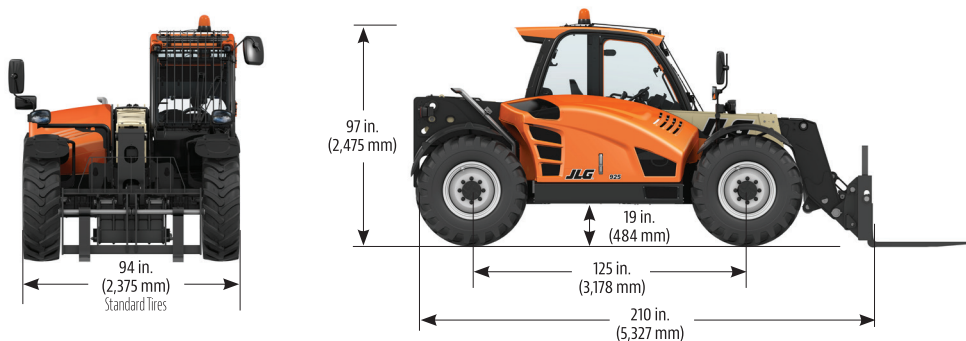
Brakes

Service Brakes	Boost Assisted Oil Immersed Multi-Disc on Both Axles
Parking Brakes	Mechanically Actuated on Front Axle Service Brakes

Cab

· Certified ROPS/FOPS Structure	· Single Joystick Controls
· Adjustable Seat	· Anti-Theft
· Horn	

DIMENSIONS & LOAD CHART

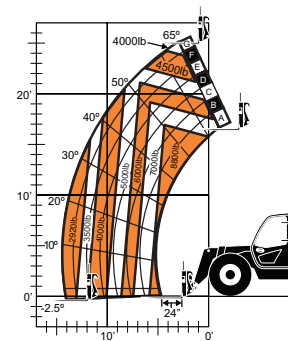


ATTACHMENTS

Standard Carriage		
Option 1	48 in.	1.2 m
Option 2	60 in.	1.5 m
Option 3	72 in.	1.8 m
Side-Tilt Carriages		
Option 1	48 in.	1.2 m
Option 2	62 in.	1.6 m
Option 3	72 in.	1.8 m
Side-Shift Carriage	48 in.	1.2 m
Dual Fork Positioning Carriage	50 in.	1.3 m
FEM Carriage	47 in.	1.2 m
Pallet Forks		
Option 1	2 in. x 4 in. x 47 in.	51 mm x 102 mm x 1.2 m
Option 2	2 in. x 5 in. x 48 in.	51 mm x 127 mm x 1.2 m
Option 3	2 in. x 5 in. x 47 in.	51 mm x 127 mm x 1.2 m
Lumber Forks		
Option 1	2 in. x 6 in. x 60 in.	51 mm x 152 mm x 1.5 m
Option 2	2 in. x 6 in. x 72 in.	51 mm x 152 mm x 1.8 m
General Purpose Bucket		
Option 1	96 in., 1.3 cu. yd	2.5 m, 1.0 m³
Option 2	96 in., 2.0 cu. yd	2.5 m, 1.5 m³
Option 3	96 in., 2.6 cu. yd	2.5 m, 2.0 m³
Option 4	96 in., 3.3 cu. yd	2.5 m, 2.5 m³
Option 5	102 in., 4.0 cu. yd	2.6 m, 3.0 m³
Multipurpose Buckets		
Option 1	95 in., 1.3 cu. yd	2.4 m, 1.0 m³
Option 2	74 in., 1.3 cu. yd	1.9 m, 1.0 m³
Dirt Bucket	96 in., 1.3 cu. yd	2.4 m, 1.0 m³
Concrete Bucket	78 in., 0.7 cu. yd	2.0 m, 0.5 m³
Fork-Mounted Work Platform	8 ft (1,000 lb capacity)	1.2 m (454 kg capacity)
Bale Handler, Clamp		
Bale Handler, Spike		
Baling, Dual Tine		
Auger		

ACCESSORIES & OPTIONS

- Air Conditioning
- Arctic Package
- Reverse Sensing System
- Boom Brushes
- Road Lights
- LED Work Lights
- Rotating Beacon
- Fenders
- Multifunction Display with Reversing Camera
- Brick Guards
- Ride Control
- Roof Wiper
- Hydraulic Coupler
- Cloth Air Suspension Seat
- Cloth Air Suspension Seat with Heat
- Rear Auxiliary Hydraulics, Single or Twin
- Twin Auxiliary Hydraulics



JLG Industries, Inc.

1 JLG Drive
 McConnellsburg, PA 17233-9533
 Telephone: 717-485-5161 | Toll-free in U.S.: 877-JLG-LIFT
 Fax: 717-485-6417
www.jlg.com

An Oshkosh Corporation Company

The JLG "1, 2 & 5" Warranty

We provide coverage for one (1) full year on the entire machine, two (2) full years or 2,000 hours on the drivetrain and cover all specified major structural components for five (5) years. Due to continuous product improvements, we reserve the right to make specification and/or equipment changes without prior notification.

Part No.: 3132251
 R00000
 Printed in USA

